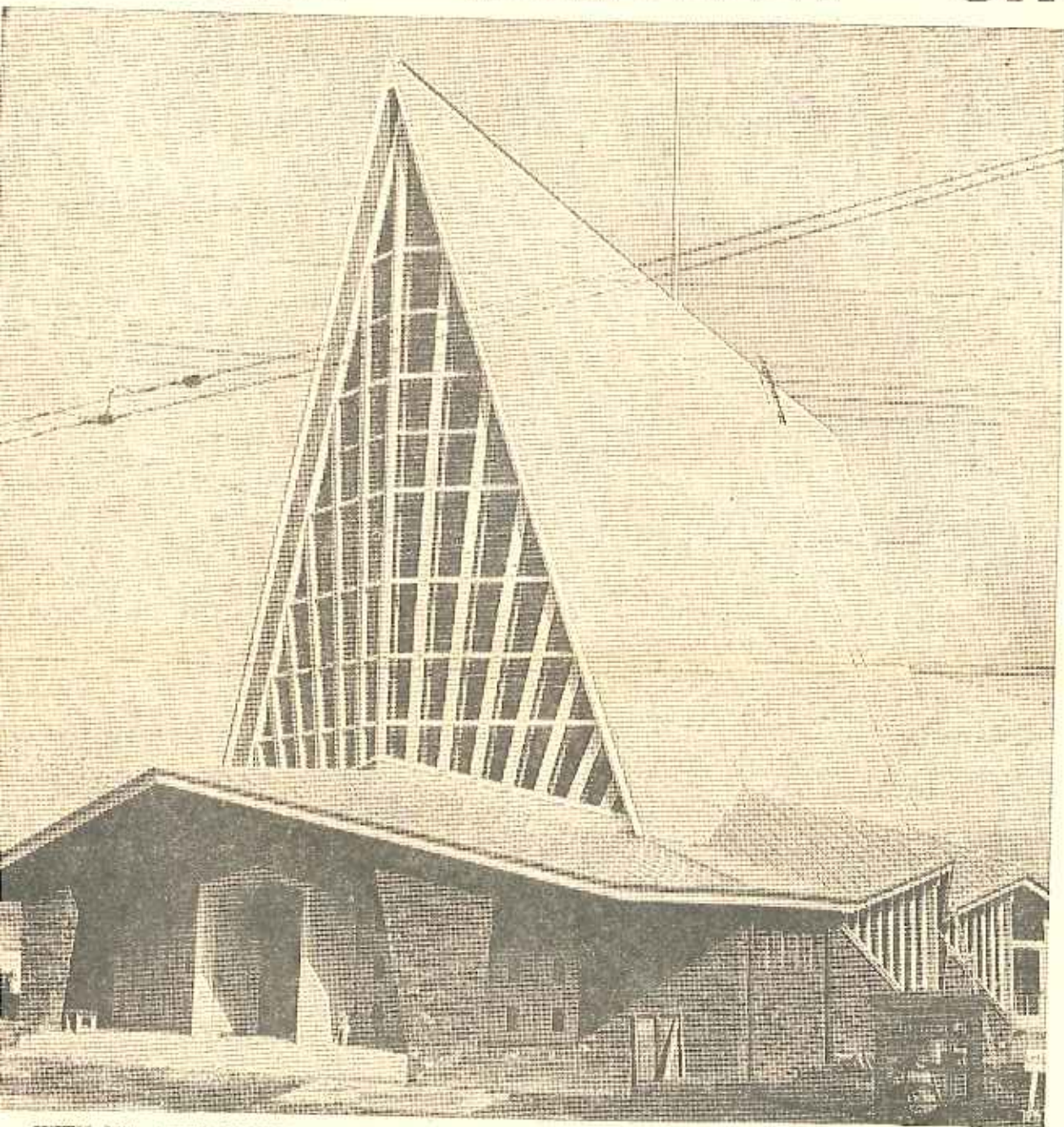
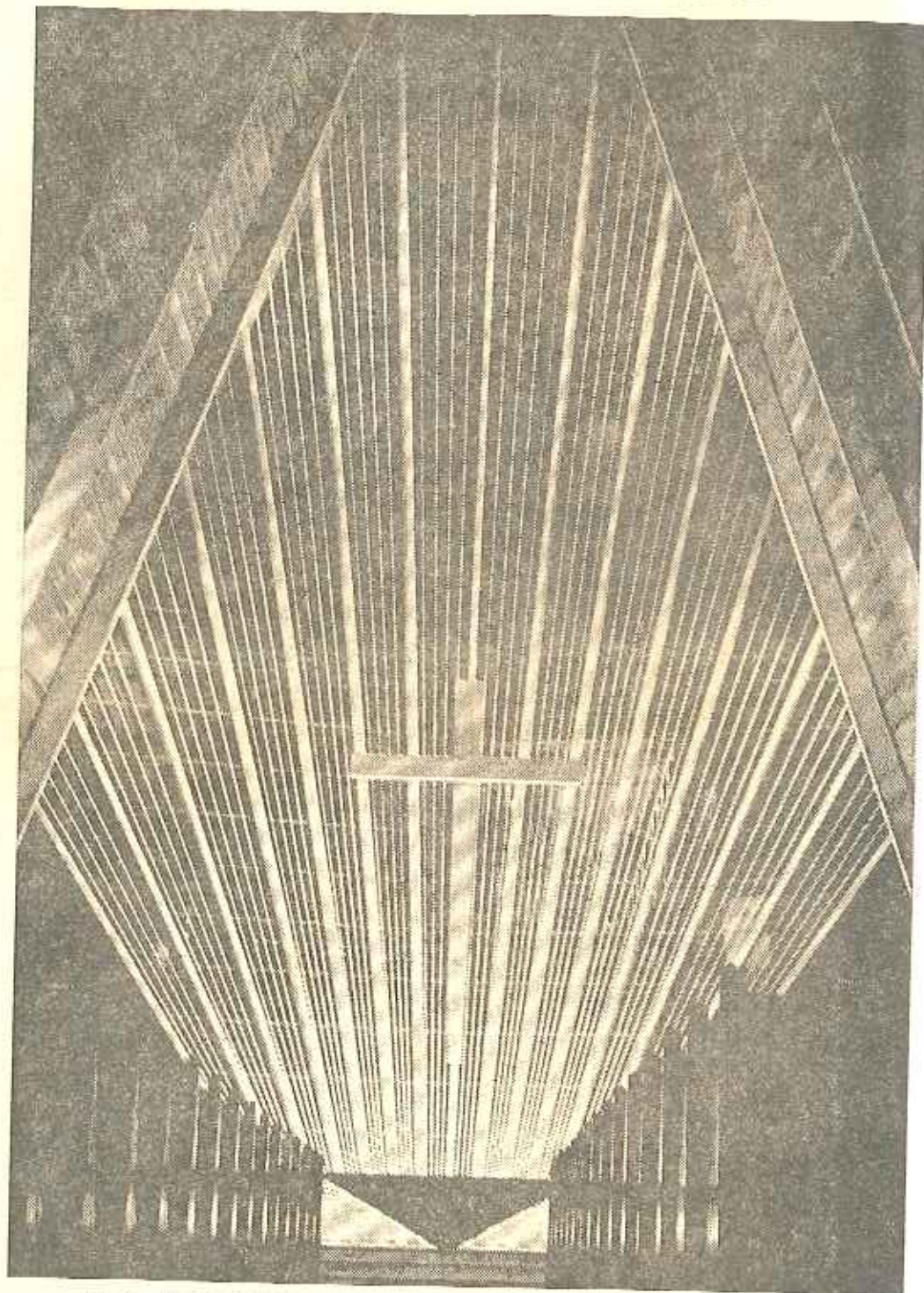


# NEW WHITELEY CHURCH— LINK WITH THE PAST

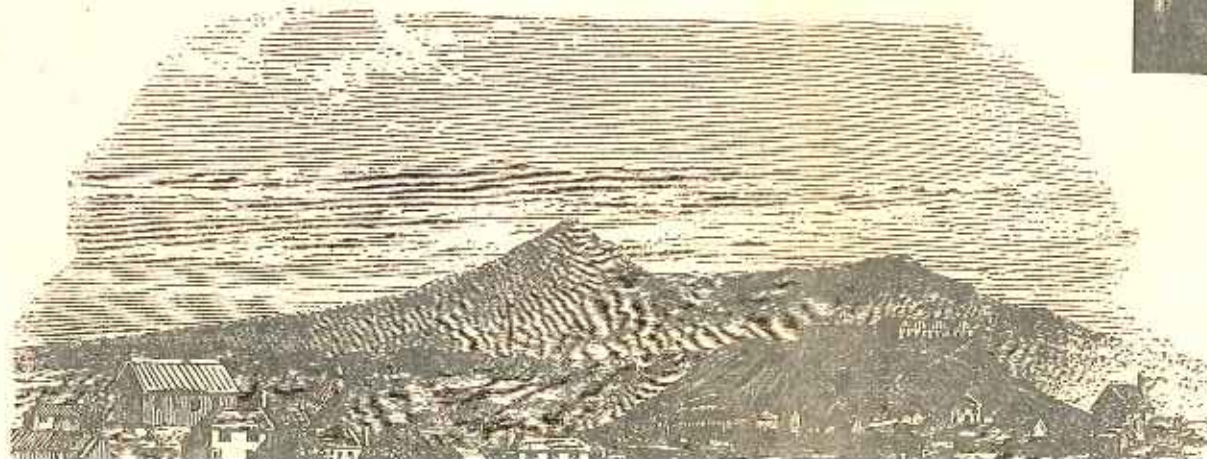
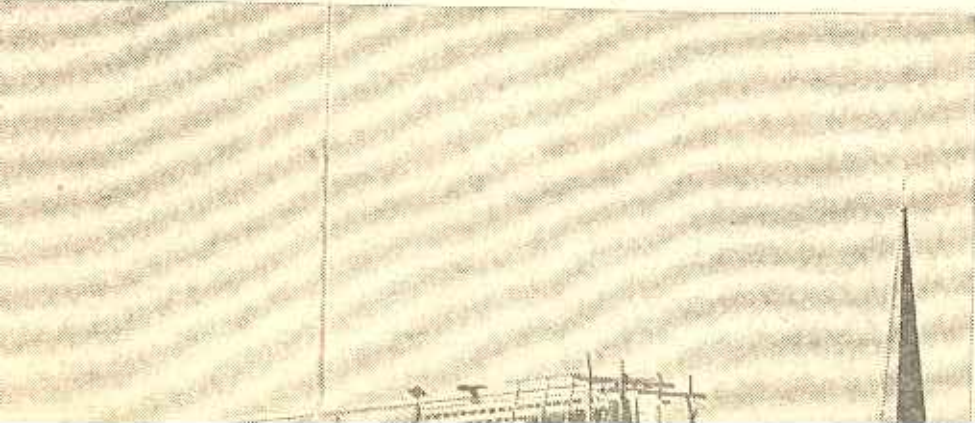


Tomorrow afternoon New Plymouth's second Whiteley Memorial Methodist Church is to be officially opened and dedicated. This striking building with its soaring angles is a modern tribute to Taranaki's martyr of nearly 100 years ago, the Rev John Whiteley (above). He was 62 when he bravely faced death at Pukearuhe on February 13, 1869, the final act in the conflict of Maori and pakeha. The tragic death of one who had served the Maori race with missionary devotion from his arrival at Kawhia in 1834 and later in Taranaki was mourned by both races. When 40 years after its construction the Wesleyan church at the corner of Lizardet and Courtenay Streets became too small for the congregation, it was decided to replace the building with a church to seat 550 persons. This was the first Whiteley Memorial Church and it served Methodism in New Plymouth for sixty years until the destructive fire in February, 1959. Despite recent heavy commitments for a Methodist Youth Centre, the challenge of replacement was faced with faith and enthusiasm. The foundation of the new church was laid on September 16, 1961. Tomorrow this impressive addition to New Plymouth's architecture is ready for its dedicated purpose, and the Taranaki Herald marks the occasion with this pictorial feature.

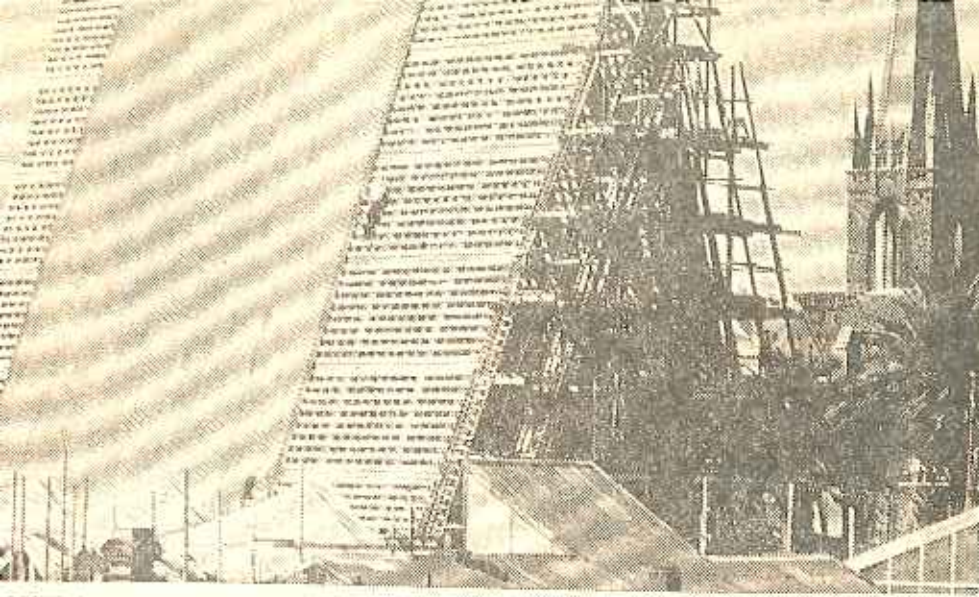


THE MAJESTIC LINES of the new church's interior are enhanced with night lighting. The altar is of black stone. Above it and inclined over it is a 15-foot wooden cross. The organ including part of the organ from the first Whiteley Memorial Church is on two levels high above the Radianee behind the Altar.

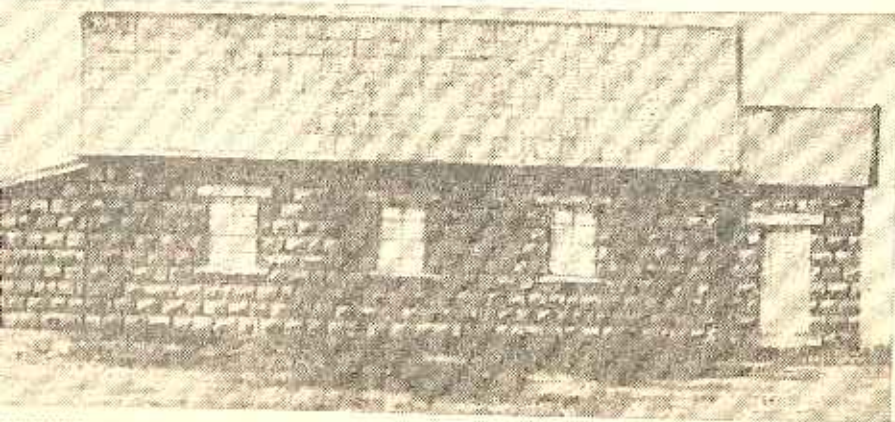
WITH ITS ALUMINIUM FLUTED ROOF reaching 70 feet above the church floor and the stainless steel spire adding another 40 feet the new church commands the eye from every direction. The church and contents have an insured valuation of £78,000.



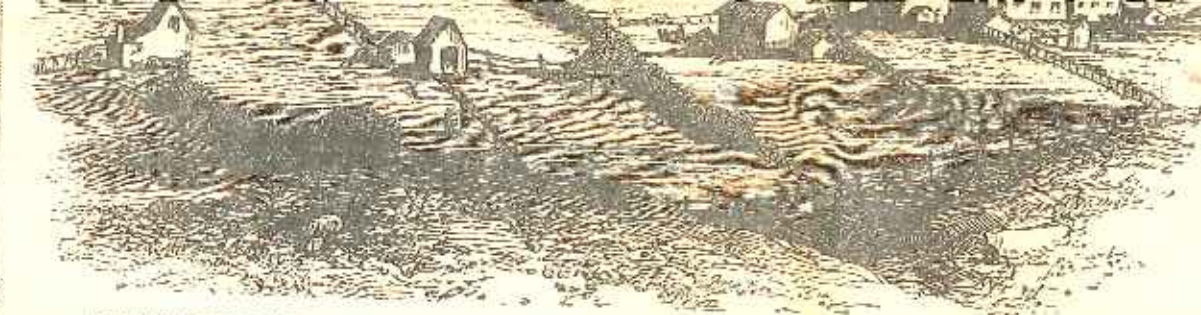
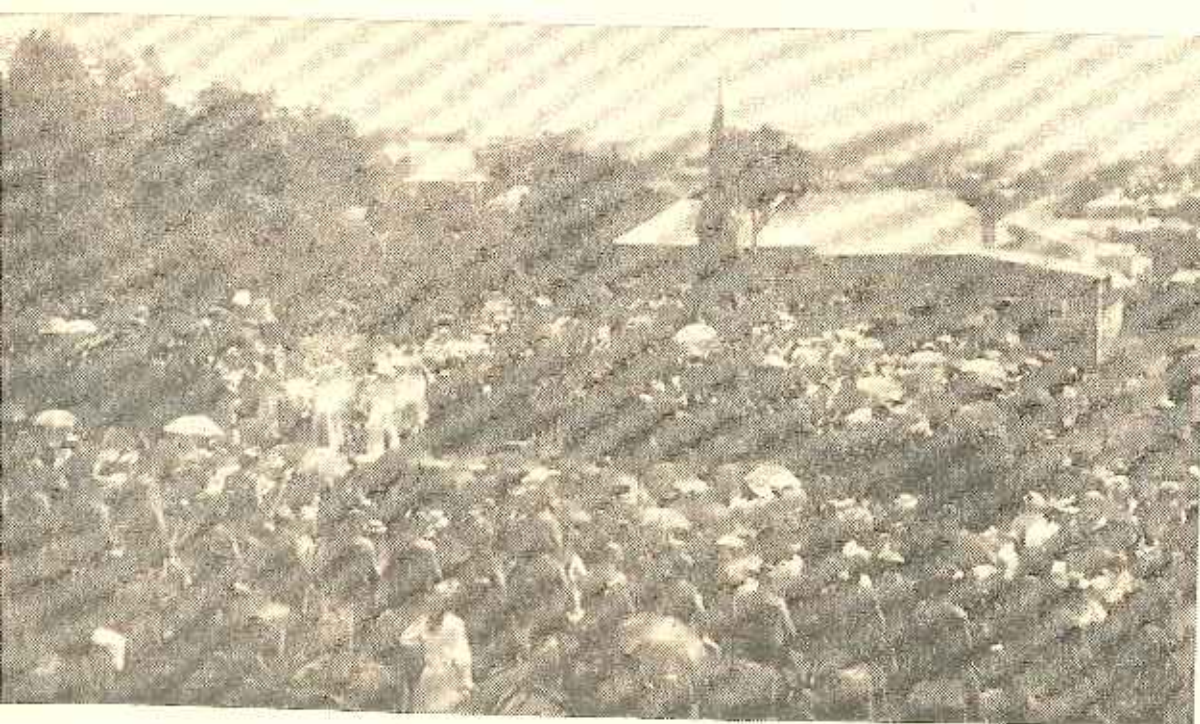




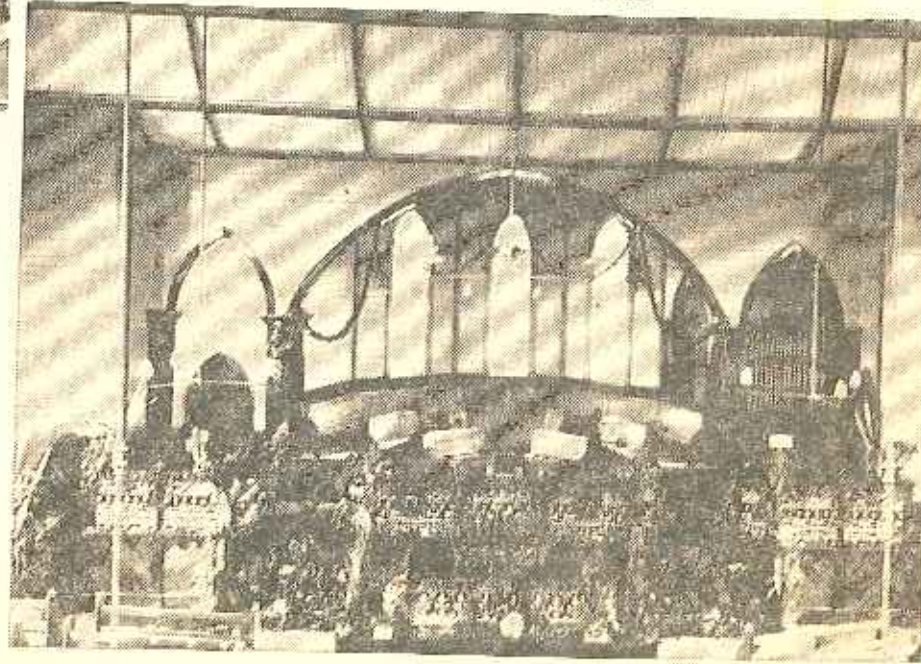
**CONTRASTS AS THE CHURCH TOOK SHAPE.** New and old concepts in church dignity are highlighted with the spire of St Andrew's Presbyterian Church on the right. Workmen use the intricate timbering as a ladder while the shining aluminium fluted roofing is laid in strips.



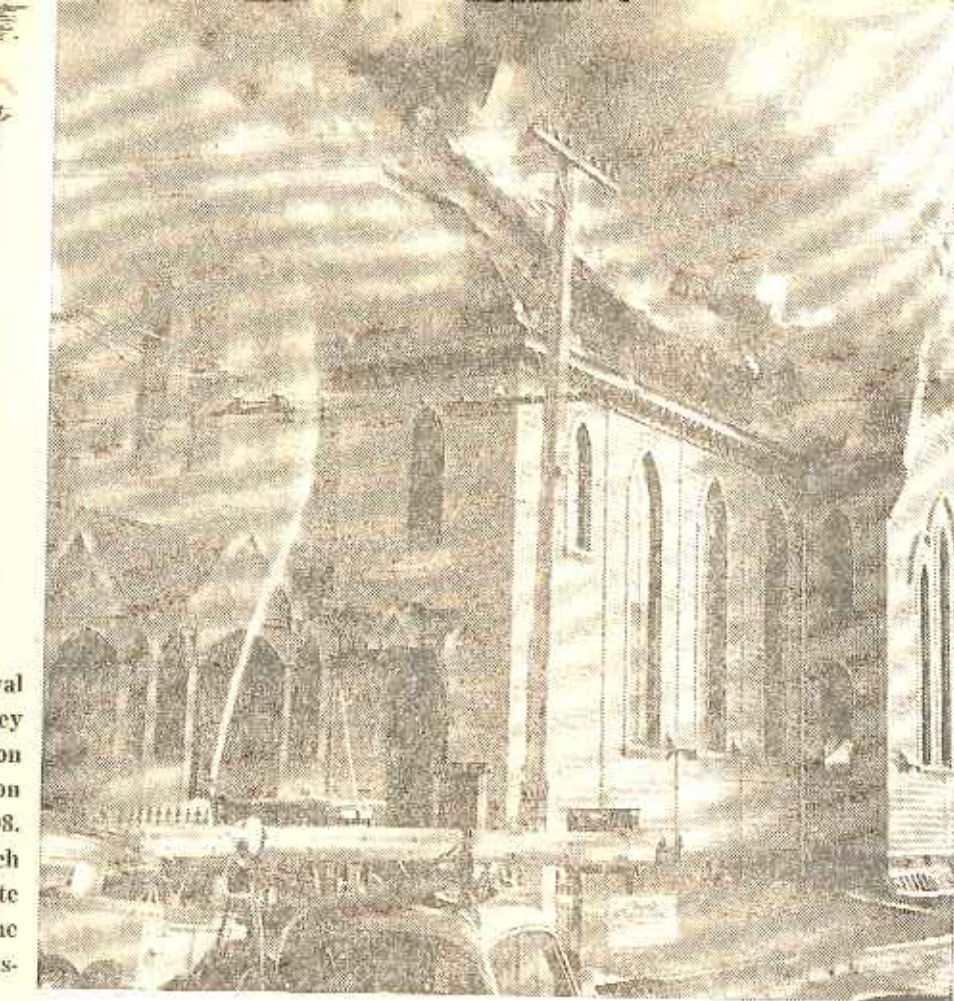
**ANOTHER CONTRAST.** This was the first permanent Methodist church in New Plymouth, the earlier ones being the Rev Charles Creed's pioneer rush chapel Ngamoitu and a raupo whare in Brougham St near the present Salvation Army Citadel. Then in 1843 the Wesleyan settlers bought this sandstone chapel Courtenay St east of the present site. The Rev John Whiteley shared the evening service here on September 10th, 1843. It remained the Methodist church for the next 13 years.



**A CONTEMPORARY SKETCH** of the eastern part of New Plymouth in 1856-57. On the left the Wesleyan (Methodist) Church (later shifted to become Whiteley Hall) dominates the scene. The military barracks are seen on Marsland Hill. Liardet Street is on the left and the line of Devon St is shown by detached buildings from left to right. A church note from 1856 records "halfacre and a commodious wooden edifice which has encumbered us in wicked indebtedness."



★  
**LEFT:** A harvest festival in "the first Whiteley Memorial Church" soon after its opening on December 15th, 1898. Members of the church of later years will note the many changes in the church interior as illustrated above.



★  
**A DRAMATIC SCENE** in the late afternoon of February 18th, 1959, when flames were breaking through the high roof of the first Whiteley Memorial Church. The destructive fire began under the roof when the building was being extensively repaired.



**LEFT:** The laying of the foundation stone of the first Whiteley Memorial Church on December 9th, 1897, was an important event, the distinguished guest being the Governor, the Earl of Ranfurly. This was the scene with mounted troops drawn up in the foreground. Lord Ranfurly used a trowel made from New Plymouth ironsand and a mallet fashioned from the first oak tree grown in the settlement. **RIGHT:** To make way for the new church this wooden church, officially opened on October 2nd, 1856, on the Liardet St-Courtenay St corner, was shifted to an adjoining site to the north. Here as Whiteley Hall and Sunday School the building served two more generations before it was demolished to make way for shops.

