

# Magnificent views a feature of new Assembly Church

New Plymouth's new Assembly of God church hall, which is to be officially opened next Saturday, is without doubt the envy of other church groups throughout New Zealand for the beautiful views that are obtained from the Poplar Grove site.

## WORLDDAY OF PRAYER

Friday, March 6 marks the World Day of Prayer. Each year, together with peoples from over 150 countries, we in New Zealand are linked in a chain of prayer and fellowship.

"This year the theme is 'The Earth is the Lord's', and the service was prepared by American Indian women brought together by Church Women United which sponsors the World Day of Prayer in the United States, and who had been asked to prepare the resources for the 1981 celebration. The women represented Indian tribes from throughout the USA — south, north, east and west — who work in their homes, their communities and some at the national level of American Indian affairs. Most are wives, and mothers: some are grandmothers. It is the Christian

complex ends a period of "homelessness" for the church. The church originally had a spacious and attractive home in Barling Terrace, but the swift growth of church membership quickly made those premises too small and created unsolvable parking problems in the little street.

faith of these women and their concern for their families, tribes, their nation and the world's people which prompts their focus in this service.

It has been said that the Native American people were the first ecologists. Certainly their love for their land has been one of the outstanding traits of the Indian people of North America. In today's quest for technological excellence and the exploitation of natural resources by which this effort is sustained, Indian people see the greatest danger to the earth and it is these concerns which they wish to express in this prayer service.

Five services are to be held in New Plymouth next Friday and members of all the churches are combining to take part in them.

The building was therefore sold about three years ago and the congregation has used the New Plymouth Opera House since then.

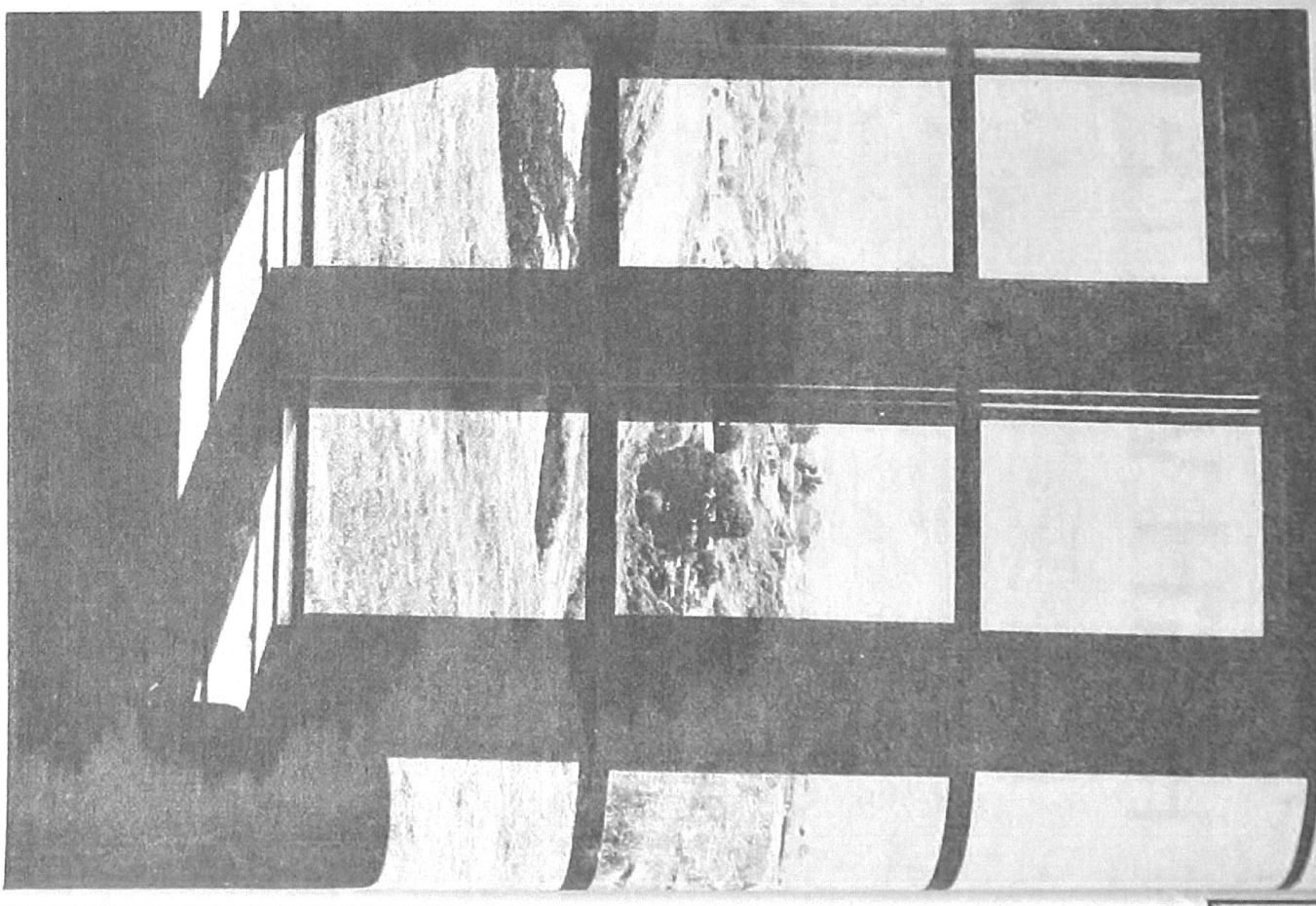
The hall that has been erected at Poplar Grove is just that — a hall. It represents the first stage of a longer-term project which will eventually see a main church added, and the present facility reverting to use as a church hall.

But in the meantime the hall will be able to cater adequately for the needs of the congregation. It has seating for 450 people, with ample prayer room, office, kitchen, creche and Sunday school facilities as well.

The hall, designed by New Plymouth architect, Mr George Richardson, has in fact been in use since just before Christmas.

At the opening, which takes place at 2 p.m. next Saturday, the guest speaker will be Pastor Andrew Evans, General Supervisor of God in Australia. Pastor Evans will stay on and conduct the night services at the church from Saturday until the following Thursday.

There has been much local comment made on the attractiveness of the grounds and gardens around the hall. The surrounds were designed and laid out by church members.



# An Assembly of God's People 62 POPLAR GROVE N.P.

**A CHURCH WHERE YOU ARE  
ALWAYS WELCOME**

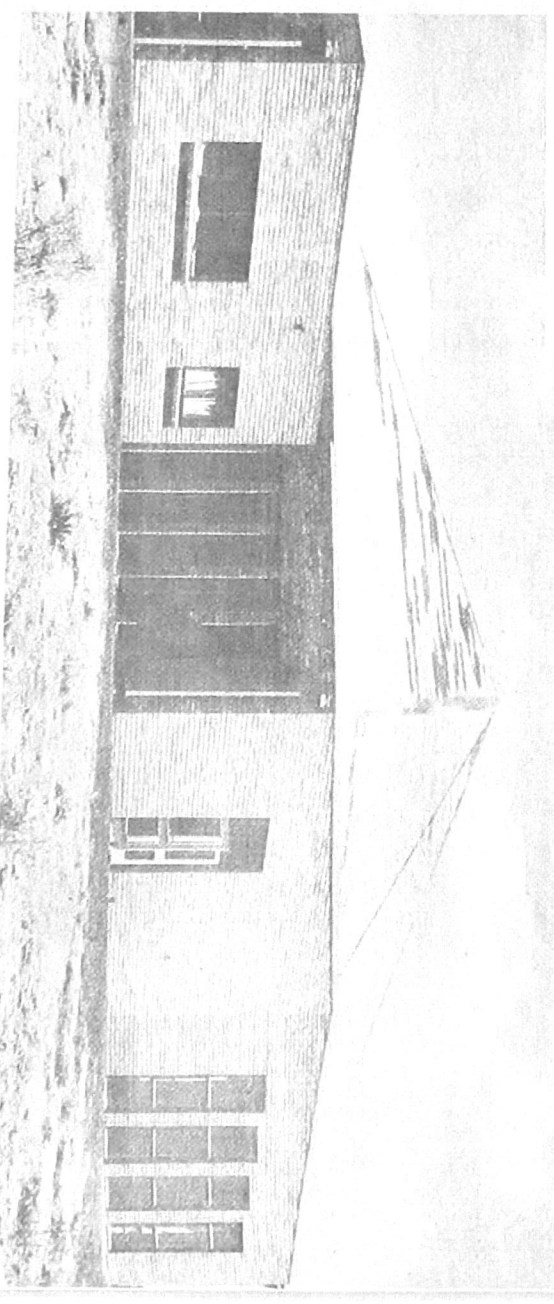
**WE CATER  
FOR THE  
NEEDS OF  
THE WHOLE  
FAMILY ...  
SUNDAY**

**SERVICES:  
10:30 A.M. & 7 P.M.**

Cribs are provided for babies;  
Creche for toddlers;  
Children's Church for older children while the Services  
are in progress.

**YOUTH SERVICES:  
SATURDAY 7 P.M.**

Enquiries: Assistant Pastor David Clark. Ph 399999.



**WE CARE  
FOR YOU  
GOD  
CARES EVEN  
MORE**

Pastor & Mrs Michael  
Rafferty

**PHONE 33952**