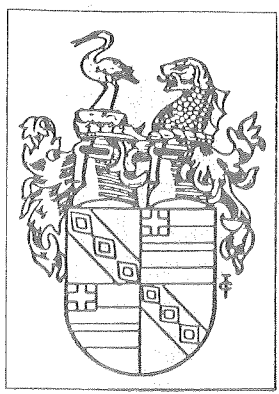


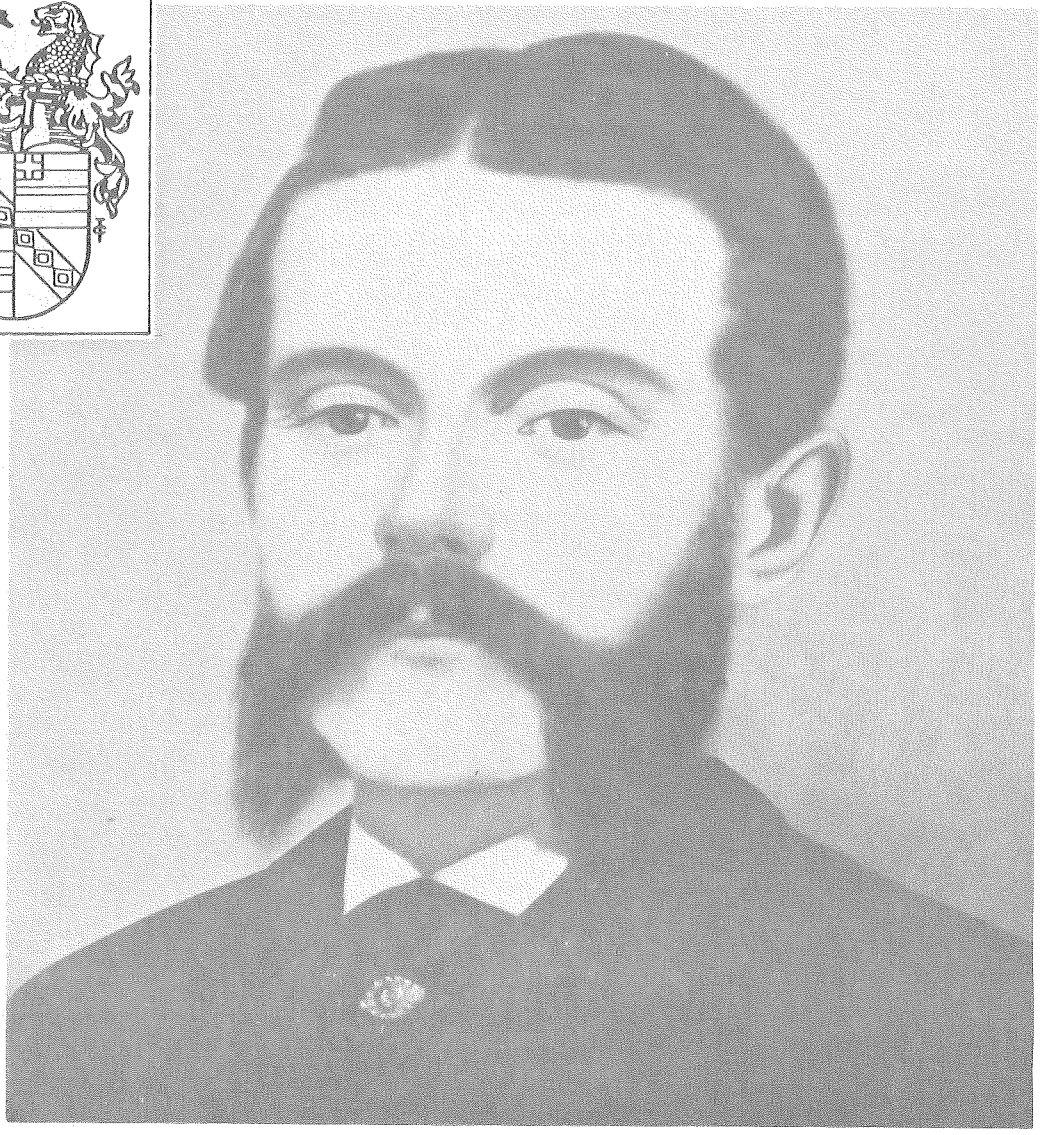
\$3.00

HO
PATEA,
ES
ERE

Charles William Broughton 1833-1865



ary)



Officer)

r)

Compiled by A.R. Broughton for the
C.W. Broughton and Descendants
Reunion, held at Patea, Taranaki,
on Labour Weekend 1977.

CHARLES WILLIAM BROUGHTON 1833–1865

Charles William Broughton was born in Walworth, London, on Saturday August 10th 1833. He was the oldest of James' and Eliza's children.

In 1851 he came to New Zealand with his parents and brothers and sisters and settled in Wanganui.

Between the years 1852 and 1857 Charles had become well acquainted with the areas within the Wellington province (i.e. the boundaries as we know them now). By that time he had also become familiar with the Maori language because of his business dealings with them in the wheat trade, especially at Maraekowhai, up the Wanganui River. He had also made himself familiar to the womenfolk of that race and especially one in particular from the Taranaki area, Miriama Hinekoringi Taiko. She was a descendant of Ngawaka-taurua and Hinepounamu of Ngati Ruanui, and Ngarangikatitia of Nga Rauru. She was also partly related to the Nga Mahanga-a-Tairi sub tribe of Opunake – Puniho area; all three tribes form part of the grater Taranaki confederation.



CHARLES WILLIAM BROUGHTON.
Probably taken just before his death.