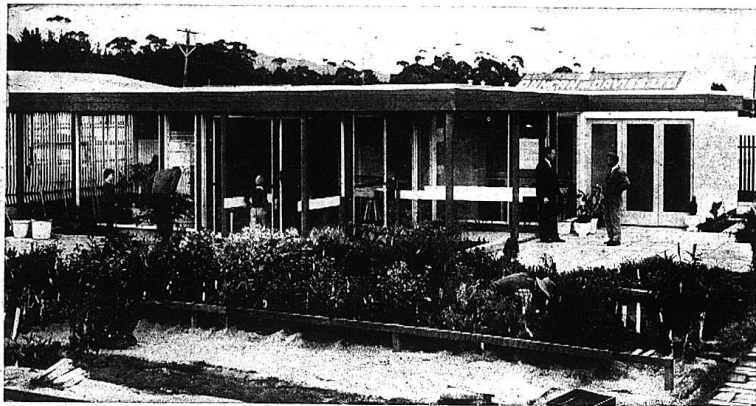


# Plant centre at Westown



THE NEW DRIVE-IN PLANT CENTRE of Davies Retail Ltd, at Duncan and Davies' nursery in New Plymouth. The extensive use of glass makes the building's atmosphere airy and pleasant and gives a good view of the sample plots of plants outside. These plots are still being planted out, but will soon be completed. The shade house for frost-tender and shade-loving plants is on the left of the picture.

## In charge



DAVIES Retail Garden Centre is managed by Mr. Graham Miller, the well known New Plymouth Horticulturist. Mr. Miller is a qualified nurseryman with 14 years experience in the industry.



Congratulations to  
**DUNCAN & DAVIES LTD.**  
from the manufacturers of

## ALASKA

You'll congratulate Duncan & Davies, too, if you let them sell you this  
**AMAZING ALASKAN PLANT FOOD**  
which will provide  
**Truly Incredible Results in YOUR Garden**

- 100% Organic Liquid Fish Manure
- Remarkably Quick Acting
- Condensed from Pure Fish
- 100% Natural Plant Food

4oz. Bottle only **3/11**  
8oz. Bottle only **6/3**  
Plus large economy sizes.

**Get ALASKA NOW!**

## New concept of selling plants

A NEW concept in the sale of plants and shrubs has been incorporated in the £4500 plant centre which has just been completed at Duncan and Davies Ltd's nursery, on the corner of Tukapo St and Wallath Rd, Westown, New Plymouth.

The new shop is owned by Davies Retail Ltd, the subsidiary branch of Duncan and Davies, and is responsible for the local retailing of the nursery's plants and shrubs.

The shop's unique feature is that it is the only one of its type in New Zealand with its complete selection of plants available for immediate inspection by buyers. More than 1500 varieties may be seen in or around it—for, besides the building itself, there is a quarter-acre of sample plots and a shade house for more delicate plants.

The building was designed by Mr. Edgar T. Collins, a local architect. It covers 1300 sq ft. As well as the shop, which has three walls made almost completely of glass, there is an office for advisory and garden planning work, a packing room, staff facilities and a store room. There is a drive and stacking area for customers.

The layout follows that of the "drive-in plant centres" which are the trend overseas. The background supply for the centre is provided by the 120 acres of plants in the main nursery around it. Customers may see the

### FRIENDLY HELPER



ASSISTANT in DRL is Miss Jackie Cloke of Leperton, known to many for her interest in the Country Girls Club. She has been with the company for three years and has proved herself a very willing and able assistant who has acquired a very considerable knowledge of horticulture.

registered until 1914, but it was 65 years ago that business began, on a half-acre section near the plant centre.

The nursery now operates on about 200 acres, with more than 100 of these in special production.

From a staff of two, the company has grown steadily so that 150 staff members may be employed this winter.

Work will soon begin on a packing shed at Katero Rd, with a railway siding which will enable easy delivery of plants to other New Zealand centres.

Plans for the 17,000 square foot packing shed are well advanced and use of it will probably begin in August. The main nursery at Westown will remain headquarters for the firm and be concerned mainly with propagation and supplying stock to the plant centre.

This shop was closed in early December last year and plants and other garden supplies were moved to the main nursery, where they were sold in the same way as before.

Now, in the plant centre, selling to local customers is handled by the same staff as in the old shop.

The history of the main firm of Duncan and Davies goes back much further. The company was not



as you like it  
Our aim is quality always—best materials and skilful workmanship. Because of this decorating by us is much in demand.

**F. E. WHITTLE**  
10 PRINCES ST. PHONE 82562

concrete by redimit



### Clem Parker's NURSERIES

are proud to be associated with

## D.R.L.

in their new venture because they stock and sell our high class

### BEDDING PLANTS

Available now and also at our Nursery, Devine Lane (near West End School), KILGARD POPPES STOCKS NEMESIS PARASIES CINERARIAS, etc.  
N.P. PHONE 83022

### CLEM PARKER

DAVIES LANE

Another example of  
**PLUMBING AND DRAINLAYING**  
Efficiently carried out by—  
**ANCHOR & ELLIS Ltd.**  
REGD. PLUMBERS  
331 DEVON ST. EAST,  
PHONE 84971, N.P.  
After Hours 82589,  
89241

We supplied the  
Coloured  
**PAVING SLABS**  
for D.R.L.'s new premises

For All  
CONCRETE PRODUCTS...  
**Moturoa**  
**CONCRETE WORKS**  
2 Seaview Road : Phone 89-883

## QUALITY PRINTING

### TARANAKI NEWSPAPERS Limited



For the past eleven years Duncan & Davies Ltd. have trusted us to produce their high-class catalogue.

Place your order now for all...  
CATALOGUES, PROGRAMMES  
MAGAZINES, all OFFICE PRINTING  
and all types of Commercial Printing.  
**TARANAKI NEWSPAPERS Ltd.**  
POWDERHAM ST., NEW PLYMOUTH : PHONE 6559 : BOX 444

**D & D LTD.** present the new

# DAVIES RETAIL

**LIMITED**  
a modern garden centre  
—a garden-lover's paradise

In the grounds of D & D's Nursery, Corner of Elliott Rd. & Wallath Rd., New Plymouth



# SPECIAL

TO MARK OUR OPENING  
specimen grade **CONIFERS**

7 DISTINCT VARIETIES

Priced at only **17/6** each

NOTE: This is the usual price for normal grade.

## D. R. L.

Elliott Road : Westown



**WE  
BUILT  
D.R.L. for good**

for  
MODERN HOMES  
and all  
COMMERCIAL BUILDING

## E. W. SCOTT

BUILDING CONTRACTORS  
36 McLEAN ST. : PHONE 6399  
P.O. BOX 3062 NEW PLYMOUTH

PROTECT YOUR INVESTMENT  
with

# MAXICROP

Give shrubs, fruit trees, roses

# A GOOD START

Before  
planting  
soak roots  
overnight  
in  
MAXICROP



a plant  
is only as good  
as its roots and  
Maxicrop promotes  
excellent root growth

Planning, purchasing, planting take time  
and money

GUARD AGAINST FROST - GALE-FORCE WINDS  
RESISTANCE TO DISEASE

All-Purpose Plant Food

# MAXICROP

N.Z. Representatives - R. A. BELL-BOOTH & CO. LTD., Johnsonville.

## PLANTS IN SUNNY SETTING



CUSTOMERS INSPECT the ornamental plants and creepers which make up the inside displays in the plant centre of Davies Retail Ltd.



STACKS OF FLOWER POTS and sprays fill shelves at the back of the shop, while garden tubs and books on horticulture fill the foreground near a stand of indoor plants. The shop sells a large variety of goods required by gardeners.

## Permanent ORNAMENTS

A wide range of attractive  
ORNAMENTAL WARE produced  
by a new Taranaki industry and  
hand finished by craftsmen, is  
here to add charm and novelty  
to your garden:

A range of light, beautiful  
GARDEN URNS to choose  
from:

Priced from **25/-** each

A range of six lovely BIRD  
BATHS. Priced from **£6**



Our comprehensive range of  
GARDEN WARE includes—

BIRD BATHS  
SUNDIALS  
FLAMINGOS  
GNOMES and FIGURES — a  
choice of over 40 designs  
made in special American  
moulds.

Available in Taranaki only from  
DAVIES RETAIL LTD. and—

# PETS PANTRY

201 Devon St. East : N.P. : Phone 87711

# Visit THE NEW DAVIES RETAIL LIMITED

SEE FULL-SIZED SPECIMENS OF HUNDREDS  
OF PLANTS

- The largest Plant Selection in New Zealand.
- Annuals, Seeds, Bulbs, Corms.
- Sprays, Fertilizers.
- Garden Tools.

FREE PARKING

FREE INFORMATION

PHONE 5662 WRITE BOX 340

JUST INSIDE DUNCAN & DAVIES LTD. MAIN GATE,  
CNR. WALLATH & ELLIOTT ROADS



Keep paths and surrounds  
weed free with...

# Phytazol A

There is no more effective weed-killer than Phytazol "A". It kills all the most troublesome weeds and grasses on driveways, paths, terraces and surrounds of sheds, garages, walls and gardens. Ask your seedsmen now for Phytazol "A" in the handy home gardener pack. Also available Phytazol "C" for long-term weed control.



IVON WATKINS-DOW LIMITED NEW PLYMOUTH

## light for display

Electricity makes the best of your merchandise because it is so versatile. Modern display as in the new DRL shop at Westown, combines the artifice of floods, spots or diffusion to make customer choice easy and to provide comfort for the working staff.

Your City Electrical showroom can supply light fixtures for every purpose however specialised and their experts also can plan light placings for you to get the best results from your displays and the most satisfaction from the rooms you live in.

CALL ON THE—

## NEW PLYMOUTH CITY ELECTRICITY

DEPARTMENT  
SHOWROOMS, LIARDET ST.  
PHONE 87669 (9 lines)