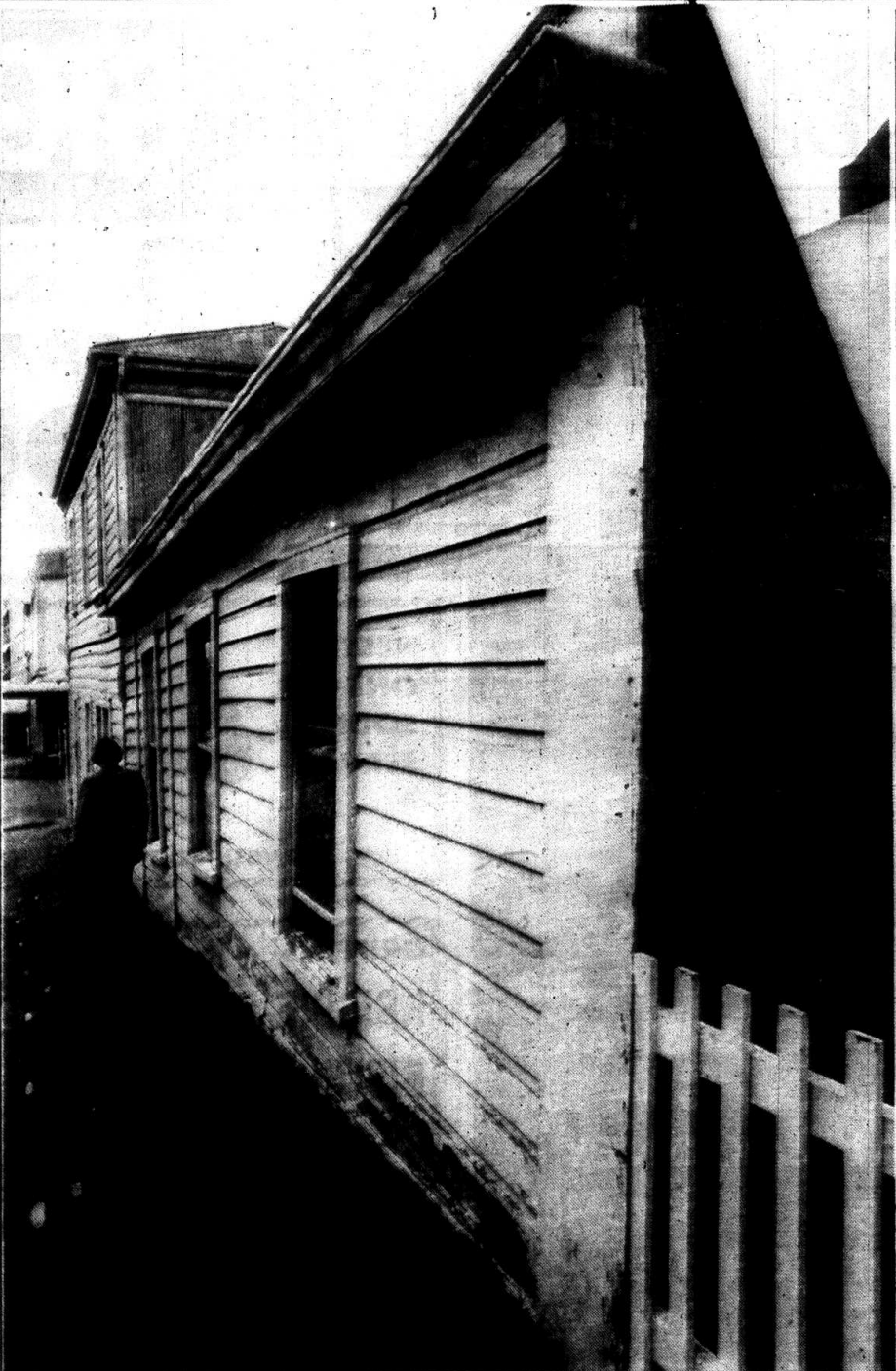


PHOTOGRAPH BY JAMES P. ...



Over a century but it won't fall down

A suggestion that this old and disused office building in New Plymouth could fall into the Mangaotuku Stream is discounted.

Both the owners and the city council engineers department stated it was safer than it looked.

The Herald's attention was drawn to the building on the King and Egmont St corner by a reader who passes it regularly and telephoned to say that in recent weeks a gap of several centimetres had opened between the west end of the building and the footpath and it appeared about to fall into the stream below.

However, a spokesman for the council engineering staff

said they had been watching the building for some time and it was in no danger.

"Wooden buildings generally stretch a mile before they tear an inch," he said. "They don't give as much trouble as concrete structures."

Band's visit

The Newton Citadel Band from Auckland played at the New Plymouth Citadel yesterday as part of celebrations for the 67th anniversary of the Waitara Salvation Army Corps.

Waitara and New Plymouth Salvation Army bands also played before about 150 people.

He estimated the structure to be 100 to 120 years old.

A spokesman for the owners, a group of solicitors, said they hoped to redevelop the site but the problem was finding finance.

Demolition was complicated by the fact the building appeared to be holding up part of the footpath in the area and any removal of the building would have to be accompanied by work to hold the footpath up.

A Herald reporting team who visited the building found obvious signs of the ravages of time and man.

The whole structure appears to have slumped unevenly on its wooden piles and besides the gap between

it and the path, walls are bowed and doorways twisted.

Several windows were open and inside vandals appear to have taken their toll.

Teenager

"The World of Fashion" with a make and model competition will launch the New Plymouth Public Library's Teenagers' Week on August 22.

The five-day programme is aimed at attracting teenagers into the library to show them the wide range of books and services available. Book displays will support each activity.

ing
Ho
ed
Ze
da
on
ju
im
Fo
|
co
La
Ch
ro
fir
sci
we
\$5
fes
la
at
Ne
|
pe
wt
an
ha
19
at
ra
sci
di
tri
ce
|
re
na
ve
wt
ty
to
sc
|
C
sa
ce
pl
th
wt
su
di
di
of

P
qu
an
th
m
tr
ab
|
lai
on
to
|
ha
be
pe
on
|
Fr
th
m
ch
al
gr
fo
w
|
as
to
co
Fi