

This massive dam designed to protect central New Plymouth from a theoretical 100-year flood of Huatoki Stream is nearing completion.

Looking from upstream, towards the Huatoki Domain, the extent of the earthworks can be clearly seen. About 200,000 tonnes of soil is being piled on the dam to create a huge bowl to hold flood water which would otherwise surge disastressfully through central New Plymouth.

New Plymouth City Council, through its Ravi McHugh, said the 200m high dam could hold 300 million litres before spillways start rechanneling overflow water into the stream below the dam.

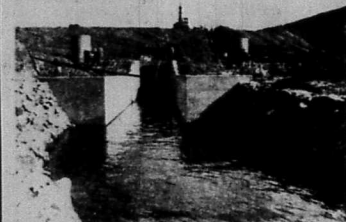
Earthworks at the \$1.25 million dam are about three weeks from completion. Another three weeks will be needed to spread topsoil and grass seed, lay footpaths and put the finishing touches, such as placing a screen across the mouth of the 112m-long, 2m by 1½m-wide culvert, under the dam.

The culvert starts behind the trees, in the foreground at right. The Mangatuku dam 70% complete, the council is about halfway through stage II of its three-stage flood detention programme.

The second stage will be complete when a dam is built near Barrett Lagoon on Mangatuku Stream. It will have an embankment less than half as high as H2's, but will have 90% of H2's water capacity.

The Mangatuku dam (M1) will cost about \$500,000. The whole scheme is 30% funded by the government.

Stage one of the programme included construction of a dam on Waimea Stream, which flows into



The Huatoki Stream will normally flow through this culvert but when water levels are up, excess water will build up behind the dam.

## Flood control — a dam good scheme

Huatoki Stream near Devon Mall area.

The third stage will probably begin in 1988, with the creation of a channel on Huatoki Stream downstream from King's Building in the central city. This will also provide access to New Plymouth's remodelled foreshore.

City engineer Jack Kettlewell said the flood detention programme should give 100-year protection to the principal flood areas of New Plymouth.

It will not cure localised flooding, which is a separate issue altogether. Those are individual problems that have to be solved on an individual basis," he said.

Low-lying properties along Mangatuku Stream, near Devon Intermediate School may still be hit by occasional floods. The proposed Barrett Lagoon dam should lessen flooding, but the operation of the outlet near the school when the stream is in flood means it will continue to back up from time to time.

Mr Kettlewell said that with the completion of stage III the council will have done about as much as it can to protect New Plymouth from flooding.

# Taranaki driving worst for years

Some of the worst driving seen on Taranaki roads for years is upsetting the province's traffic officers.

Senior Traffic Sergeant John Mahoney said today more than 50 tickets were issued to speeding motorists and a further 69 had been checked for driving with excess blood alcohol.

Mr Mahoney said he had not seen motorists travelling at such speed or driving so badly for years.

He could see no reason for the situation. Not only were motorists speeding but many were following too closely and not allowing the extra space required for the higher, open road speed limit.

Some of the motorists stopped during a blitz on drinking drivers were virtually drunk behind the wheel.

"There has been some quite extraordinary be-

haviour and some high blood alcohol levels."

Traffic had been heavy particularly on State Highway 3, and traffic officers were keeping a close watch on the situation today as people made their way home at the end of the Easter break.

More than 230 drivers were stopped in the drink-drive clamp down and of the 69 given road-side screening tests 40 had evidential tests. Twenty-three of these drivers requested additional blood tests.

One driver was arrested for failing to accompany an officer to a police station.

There had been a number of traffic accidents and at one in Devon St, New Plymouth, at 10.15

last night a traffic officer was apparently punched in the face, Mr Mahoney said.

Sergeant Terry McGreevy from the New Plymouth police said a man would appear in the New Plymouth District Court on April 7 as a result of the incident.

A motorcyclist is reported to be in a stable condition in Taranaki Base Hospital after an accident on State Highway 3 near Turangi Rd about 5pm Saturday.

Patricia Perry (32) New Plymouth suffered head injuries after the bike on which she was a pillion passenger went out of control. Rider Graeme Allen Jones (22) New Plymouth was treated and discharged.

## Taranaki farmers plan Friday rally

Angry Taranaki farmers plan to march through New Plymouth on Friday.

Federated Farmers Taranaki president, Barrie Smith, Cardiff, said today the New Plymouth march was designed for the whole community to get involved.

"There are probably still some people out there who don't even know that it's on."

He expects several thousand people to be involved.

Mr Smith said marchers would assemble at Pukekura Park from 11am, leave at 11.30 and head down Lizard St, through the Devon St Mall to the town clock where there will be a number of speeches.

Prime Minister David Lange's office has been

contacted, Mr Smith said it was hoped a Government spokesman would be present, but it was not clear who it would be.

Federated Farmers National president Peter Elworthy will be the main speaker.

Other speeches will be made by representatives of the transport, industry, business, meat and wool and dairy sectors and a woman will talk of the effect of falling farm produce prices and high interest rates on farming families.

"We want to cover the field out there of people being seriously affected by the Government's policies," Mr Smith said.

## Lange relishes Muldoon role

Prime Minister David Lange says he sincerely hopes Sir Robert Muldoon is promoted to the Opposition front bench and given the Foreign Affairs spokespersonship.

He said the internal political wrangling that had occurred while he had been away only strengthened the Government's position.

The election of Jim Bolger to leader meant National was now a country party and, as such, would never win an election.

The so-called merger between National and the New Zealand Party worked out between National's retiring president, its dumped leader and the

NZP acting president sounded like a marriage in a mortuary, he said.

He said Sir Robert deserved the front bench at the very least.

The Prime Minister seemed relaxed when he arrived early this afternoon, despite a busy last two days of his 16-day tour, which included Indonesia, China, Hong Kong and Manila where he was the first international leader to meet new President Corason Aquino.

He said success had exceeded all expectations, especially in China where three Pacific trade agreements had been approved in principle.

They were:

■ A pact to avoid double-tax on two Chinese joint ventures in New Zealand — a Timaru wool processing plant and a prawn farm in the Kaipara Harbour

■ An umbrella agreement covering science and technology

■ Potential investment between the two countries and exchanges of intelligence

He said China's industry was becoming more sophisticated. However, the balance of trade was four-one in New Zealand's favour — and most of New Zealand's exports were bulk commodities which the Chinese turned into high quality products.

## Corso critic

WELLINGTON. Today (NZPA). — United States support for Honduras-based Contras fighters and its deliberate military provocation of Libya will do nothing but inflame an already established situation, according to Corso chairman Don Borrie.

He said world peace was jeopardised when the US deliberately used military means in an attempt to control Third World people.

Corso called on the Government and national organisations to express New Zealand's abhorrence at US military involvement in the Caribbean and Mediterranean.

Mr Borrie said terrorism must be openly opposed, regardless of whether it was carried out by the US or its enemies.

PROSPECTUS NO 17

MOL

21

FOR A TWO Y

SECURED DE STOCK

OTHER RATES INCLUDE

- 3 months — then at call to May 1986.
- 9 and 12 month terms.

INTEREST PAID QU

- Compounded over