

STRATFORD WAR MEMORIAL COMMUNITY CENTRE

Colours

for

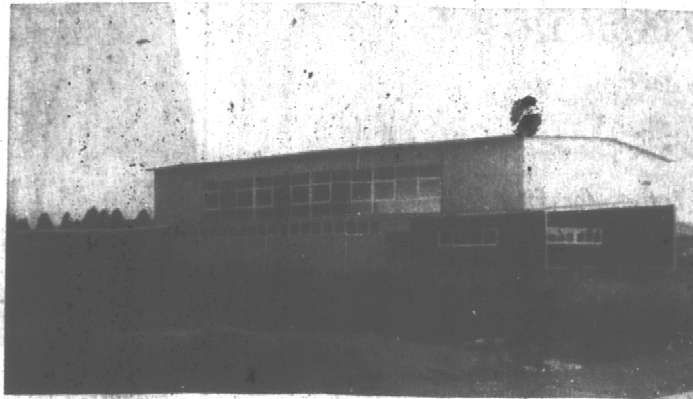


remembrance

We take pride in achievement. We acknowledge the worth of the men and women of the wartime services whose sacrifices this building commemorates. We are proud to have painted it for the remembrance of craftsmanship.

Stan LOVEGROVE & CO.

20 RIMU STREET, NEW PLYMOUTH
PHONES 4325, 5034



Photo—Lawson Collinson, Stratford

Stratford's new war memorial civic centre, in Miranda Street Central, is one of the biggest enclosed areas in Taranaki and Stratford is the first of the bigger centres in the province to complete its war memorial project.

This picture taken from the edge of the street, shows the south-easterly aspect of the building and the entrance doors. There is another entrance on the northern side. The two storey part of the front of the building gives dressing room accommodation at the back of the stage. The single storey at the back consists of dressing rooms and shower-rooms for the use of those taking sports such as badminton and indoor basketball. Along the western end of the building are the kitchen and supper or lunch room.

Floored with heart matel, the main hall is 102 feet by 60 feet. Off it on the south side is a gallery for spectators 60 feet by 10 feet. The hall is lined to a height of 10 feet with panelling and the remaining 10 feet is plastered, the plaster and ceiling being finished in a variety of pastel shades. Windows occupy a good third of the total area of the north and south walls, giving a very light and airy appearance. Heating is by electricity and the lighting is designed so that the interior at night will be as bright as in the day time.



light . . . and freedom

Room to move with an impression of more, and daylight in the furthest corner has been won with good effect with glass in this Community Centre Memorial. Light and freedom are most fitting in this "temple to youth" and most fitting that the glaziers were

Darby & Hannan Ltd.

Devon Street, New Plymouth



for generations to come

This is a Community Memorial of which to be proud. Its dignity and usefulness make it suitable for the commemoration of services faithfully rendered. Its permanence is assured by faithful construction from lasting materials. A fine building for you has been made in our good building.

J. H. ASHMAN
NEW PLYMOUTH LTD.

14 CONSTANCE ST. PHONE 3767

SOLID and FIBROUS



PLASTERING

including the fixing of acoustic tiles in the Stratford War Memorial Community Centre were all done by—

A. R. JENKINS & CO., LTD.

JULIET STREET, STRATFORD



ELECTRICAL WIRING



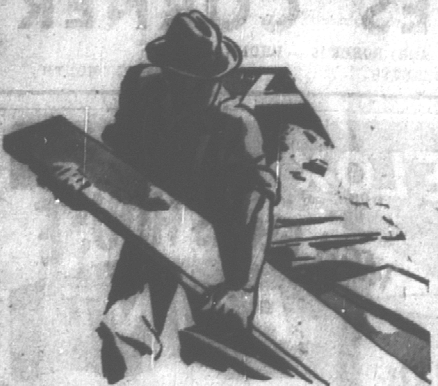
This, the largest enclosed hall space in Taranaki, required efficient lighting. We guarantee neat and efficient installation for all electrical requirements in buildings large or small and we always keep abreast of the most modern developments.

FOR ALL ELECTRICAL WIRING CONTACT—

C. DRURY

78 Clemow Rd.,

New Plymouth

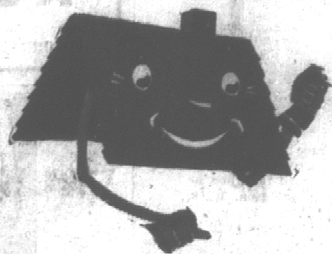


JOINERY WITH PRECISION and quality

Timber selection, careful seasoning and exact machining add up to the craftsmanship in joinery that is our memorial in this and thousands of Taranaki buildings.

Sash & Door & Timber CO., LIMITED

GILL ST. NEW PLYMOUTH PHONE 5740



THE ROOF YOU CAN LOOK UP TO

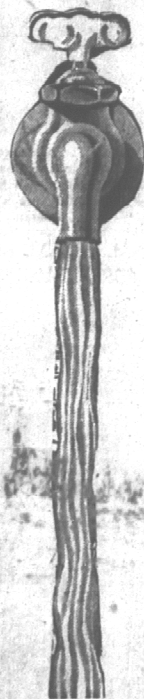
For permanence and all-weather protection the Stratford War Memorial was roofed with special care and modern technique by us.

ROOFING CONTRACTORS
IN
ASBESTOS BUILT-UP FABRIC
Specialist in R.P.M.

Estimates free. Workmanship guaranteed.

R. J. URE & CO., LTD.

131 ADELAIDE RD. — BOX 5129 — PHONE 41-367
WELLINGTON



SERVICE

Whenever the flow of water has to be controlled for service to civilization, we are happy to do the job. For good work as you see in Stratford's War Memorial Community Centre engage—

H. T. HUGHES

Plumber & Drainlayer
400 DEVON ST. E., NEW PLYMOUTH
PHONE 2716

UNION FOR STRENGTH

Strong ties of fellowship bound the men and women of our fighting services in war . . .

Our memorial is a fitting token of the strong affection of a community . . . Endurance for the memorial is assured in the strength of the structural steel in it.



fabricated by
UNION FOUNDRIES LTD.

JULIET STREET, STRATFORD